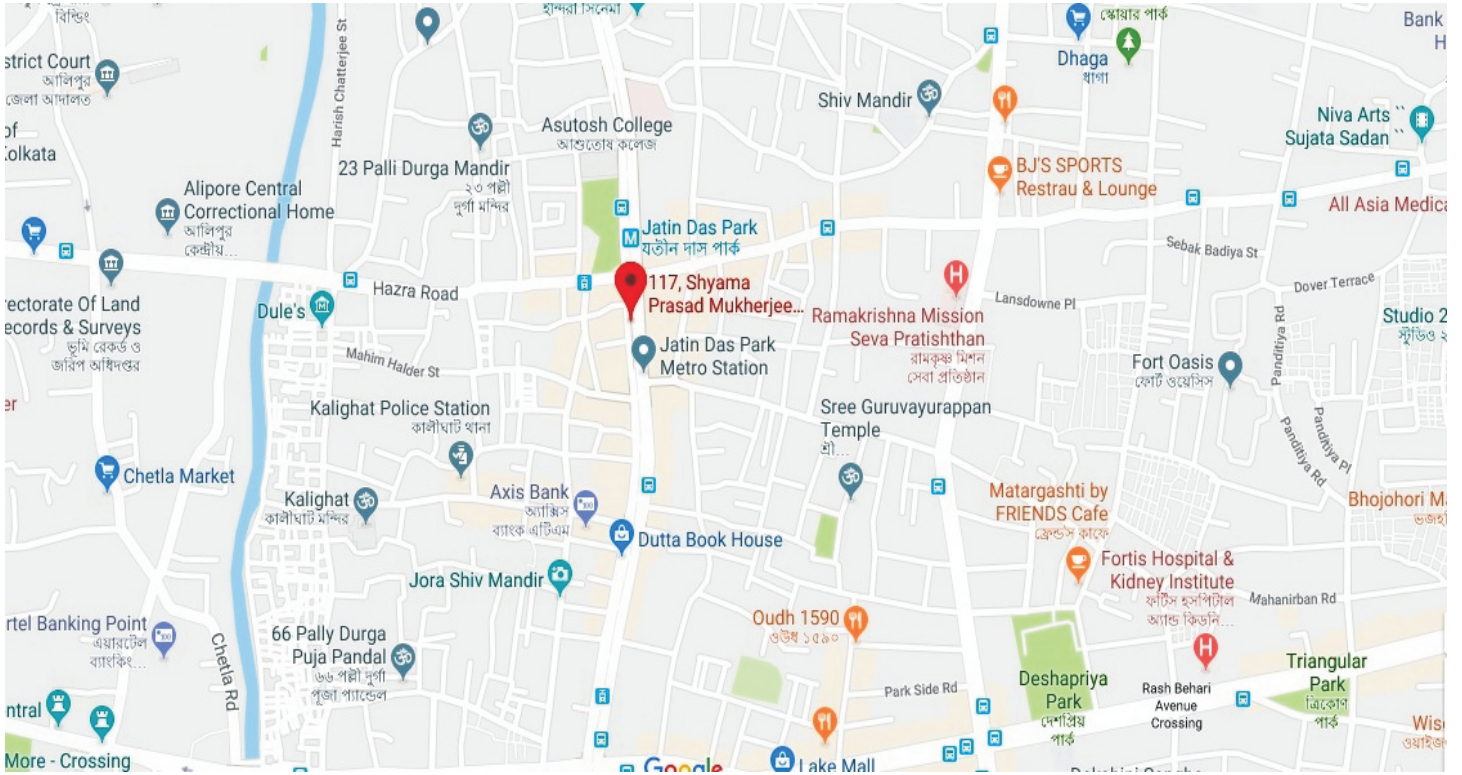


117 A



SWASTIC



**LOCATION :**  
**PROJECT :**  
**117A, SP Mukherjee Road**  
**Kolkata - 700026**



**FEATURES & FACILITIES:**

- Free Hold Land
- Aesthetically designed entrance & lobby
- Car Wash
- Personalized Mail Box
- Provision for Cable/Dish TV
- Internal Electronic PBX connection
- Housing Loan Facility
- Captive Power Supply
- Decorated façade of Lift

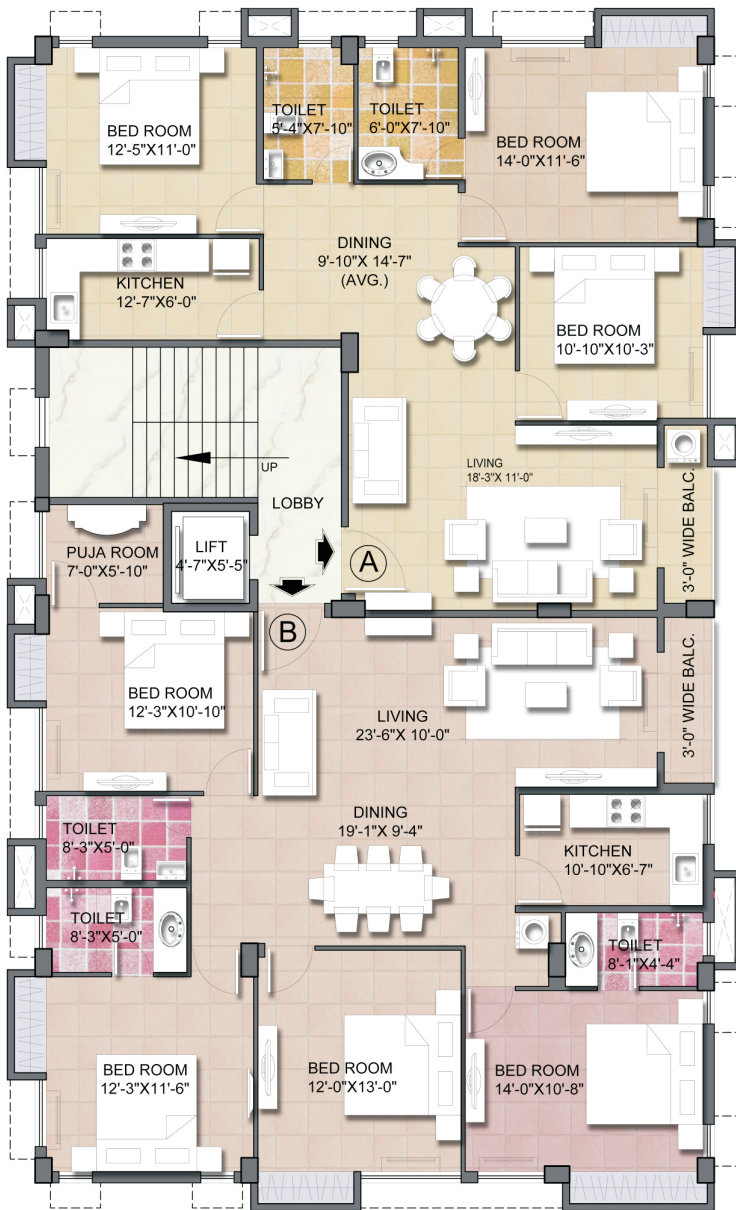
**OUR SPECIALITY:**  
**ARCHITECTS:**  
 ANJAN UKIL & ASSOCIATES  
 P-523, Raja Basanrta Roy Road, Kolkata-700029 Ph:24656656

**STRUCTURAL ENGINEER:**  
 KSG ENGINEERING CONSULTANCY  
 P/543, Raja Basant Roy Road, Kolkata-700029 Ph: 40016498

**ADVOCATE:**  
 SANJAY KUMAR BAID  
 8.Old Post Office Street, Kolkata-700001 Ph:2623713

**BANKER:**  
 KOTAK MAHINDRA BANK  
 3A, Gariahat Road, Kolkata-700019

**BUILDERS & DEVELOPERS:**  
 SWASTIC PROJECTS PRIVATE LIMITED  
 (An ISO 9001:2008 Group Company)  
 Gopala" 21/2, Ballygunge Place, Kolkata- 700019  
 Ph: 24408788 Fax: 24409955  
 Email: sales@swasticgroup.cp, Web: http://www.swasticgroup.com



Typical Floor Plan 2nd to 4th Floor



**SPECIFICATION:**

**STRUCTURE:**

Building designed on RCC frame and Foundation

**FLOORING:**

D/D Italian & other Vitrified Tiles flooring with skirting

**KITCHEN:**

Granite worktop, ceramic tiles with stainless sink

**BATHROOM**

Ceramic tiles, ISI CP fittings and sanitary ware

**ELECTRICAL**

Concealed copper wiring with modular switches and safety circuit breakers

**DOORS**

laminated Sal frame flush doors

**WINDOWS**

UPVC & Aluminum frame with glass panel and grill.

**ELEVATORS**

Adequate capacity of reputed make up to roof

**INTERNAL WORKS**

Wall putty over cement plastering

**EXTERIOR**

Weather Proof based aesthetically designed

1A/33, Kustia Road



31A, Raja Basant Roy Road



244, Rash Behari Avenue



11/B Ramani Chattarjee Road



DISCLAIMER : THIS IS NEITHER AN OFFER NOR A LEGAL EXHIBIT. THE BUILDER RETAINS THE RIGHT TO MODIFY OR ALTER ANY OF THE CONTENTS INCLUDING PLANS AT THEIR ABSOLUTE DISCRETION WITHOUT ANY NOTICE