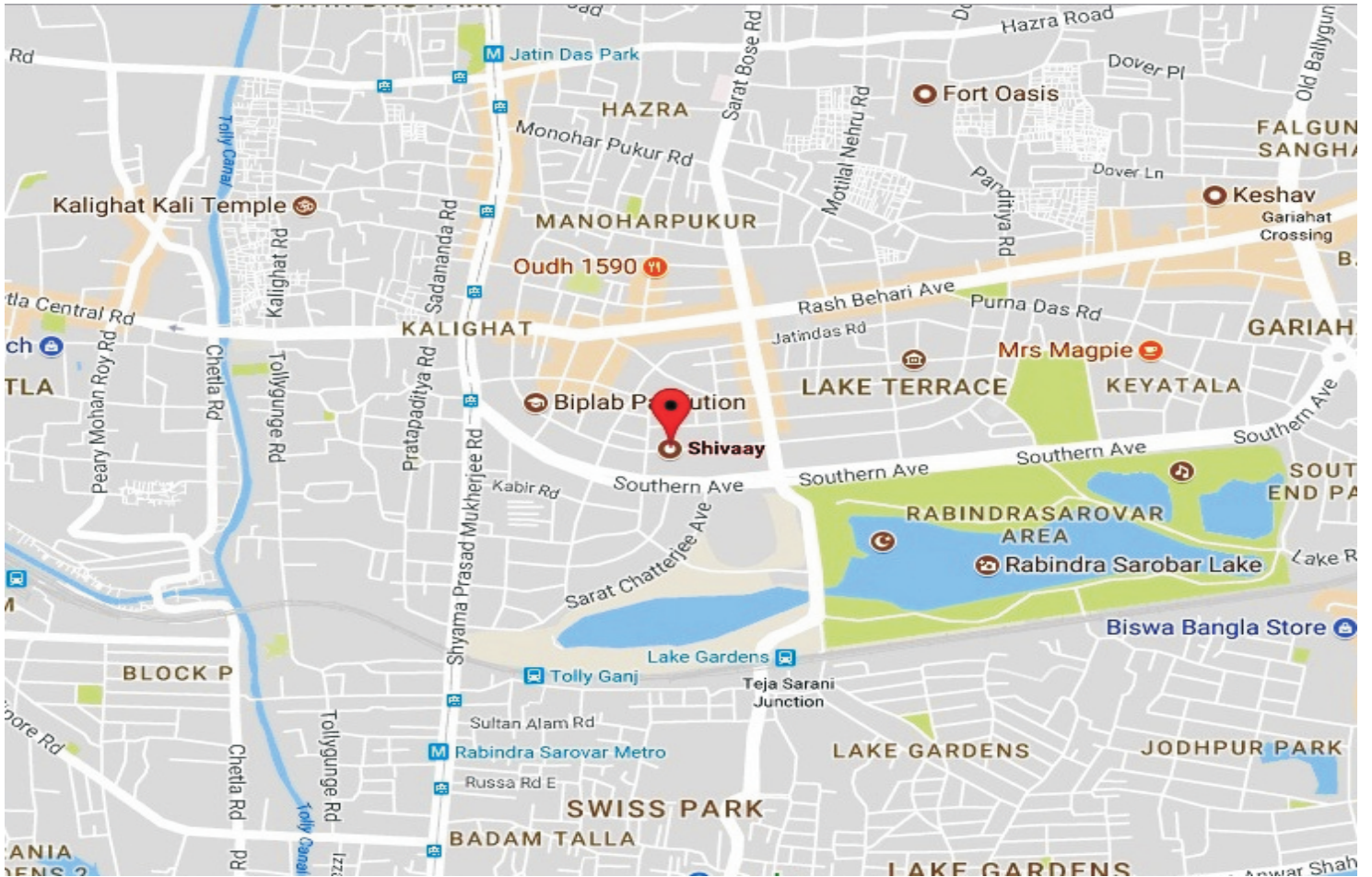


SHIVAAY



SWASTIC



**LOCATION :**  
**PROJECT :**  
**31A, Raja Basanta Roy Road,**  
**Kolkata**

**FEATURES & FACILITIES:**

- Free Hold Land
- Aesthetically designed entrance & lobby
- Car Wash
- Personalized Mail Box
- Provision for Cable/Dish TV
- Housing Loan Facility
- Captive Power Supply
- Decorated facade of Lift

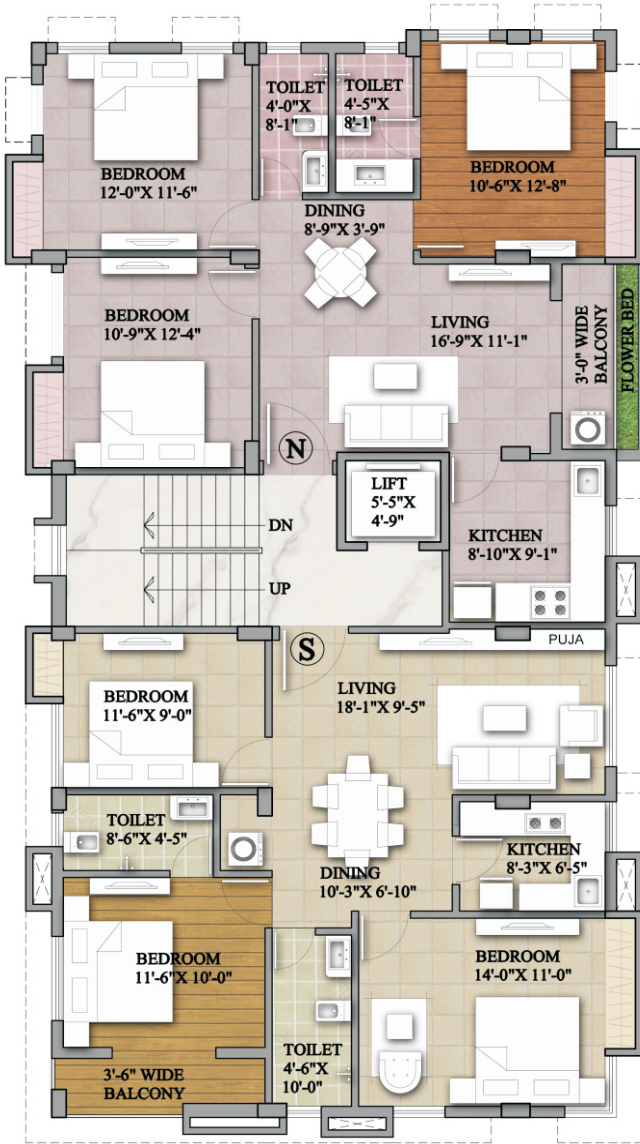
**OUR SPECIALITY:**  
**ARCHITECTS:**  
 ANJAN UKIL & ASSOCIATES  
 P-523, Raja Basanrta Roy Road, Kolkata-700029 Ph:24656656

**STRUCTURAL ENGINEER:**  
 TETRACON ENGINEERING CONSULTANCY P. LTD.  
 2T, Cornfield Road Kolkata 700 019 Ph: 4001 6495

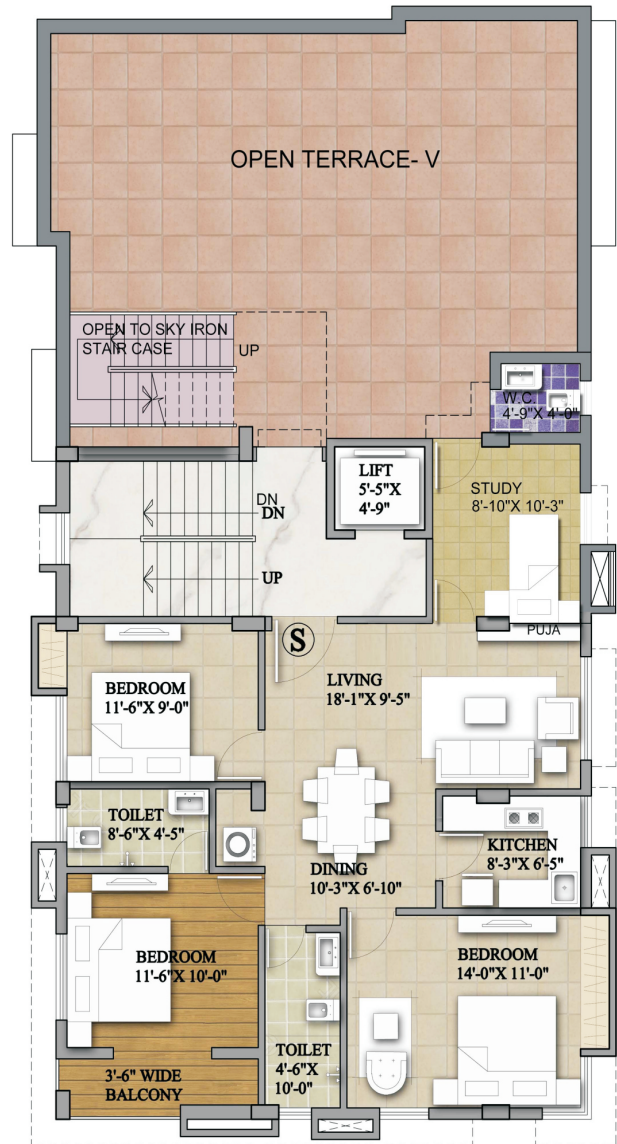
**ADVOCATE:**  
 SANJAY KUMAR BAID  
 8.Old Post Office Street, Kolkata-700001 Ph:2623713

**BANKER:**  
 KOTAK MAHINDRA BANK  
 3A, Gariahat Road, Kolkata 700 019

**BUILDERS & DEVELOPERS:**  
 SATVIC PROJECTS PRIVATE LIMITED  
 (An ISO 9001:2008 Group Company)  
 Gopala" 21/2, Ballygunge Place, Kolkata- 700019  
 Ph: 24408788 Fax: 24409955  
 Email: sales@swasticgroup.cp, Web: http://www.swasticgroup.com



1st to 4th Floor Plan



5th Floor Plan



## SPECIFICATION:

- STRUCTURE** : Building designed on RCC frame and foundation
- FLOORING** : Marble & Vitrified tiles flooring with skirting
- KITCHEN** : Granite worktop, ceramic tiles with stainless steel sink
- BATHROOM** : Wall of ceramic tiles, ISI CP fittings and sanitary ware
- ELECTRICAL** : Concealed copper wiring with modular switches and safety circuit breakers
- DOORS** : Laminated Sal frame flush doors
- WINDOWS** : UPVC / Aluminum frame with glass panel and grill
- ELEVATOR** : Adequate capacity of OTIS make
- INTERNAL WORKS** : Wall putty over cement plastering
- EXTERIOR** : Weather Proof based aesthetically designed

18, Bondel Road



41, Lake Temple Road



83, Ballygunge Place



DISCLAIMER : THIS IS NEITHER AN OFFER NOR A LEGAL EXHIBIT. THE BUILDER RETAINS THE RIGHT TO MODIFY OR ALTER ANY OF THE CONTENTS INCLUDING PLANS AT THEIR ABSOLUTE DISCRETION WITHOUT ANY NOTICE