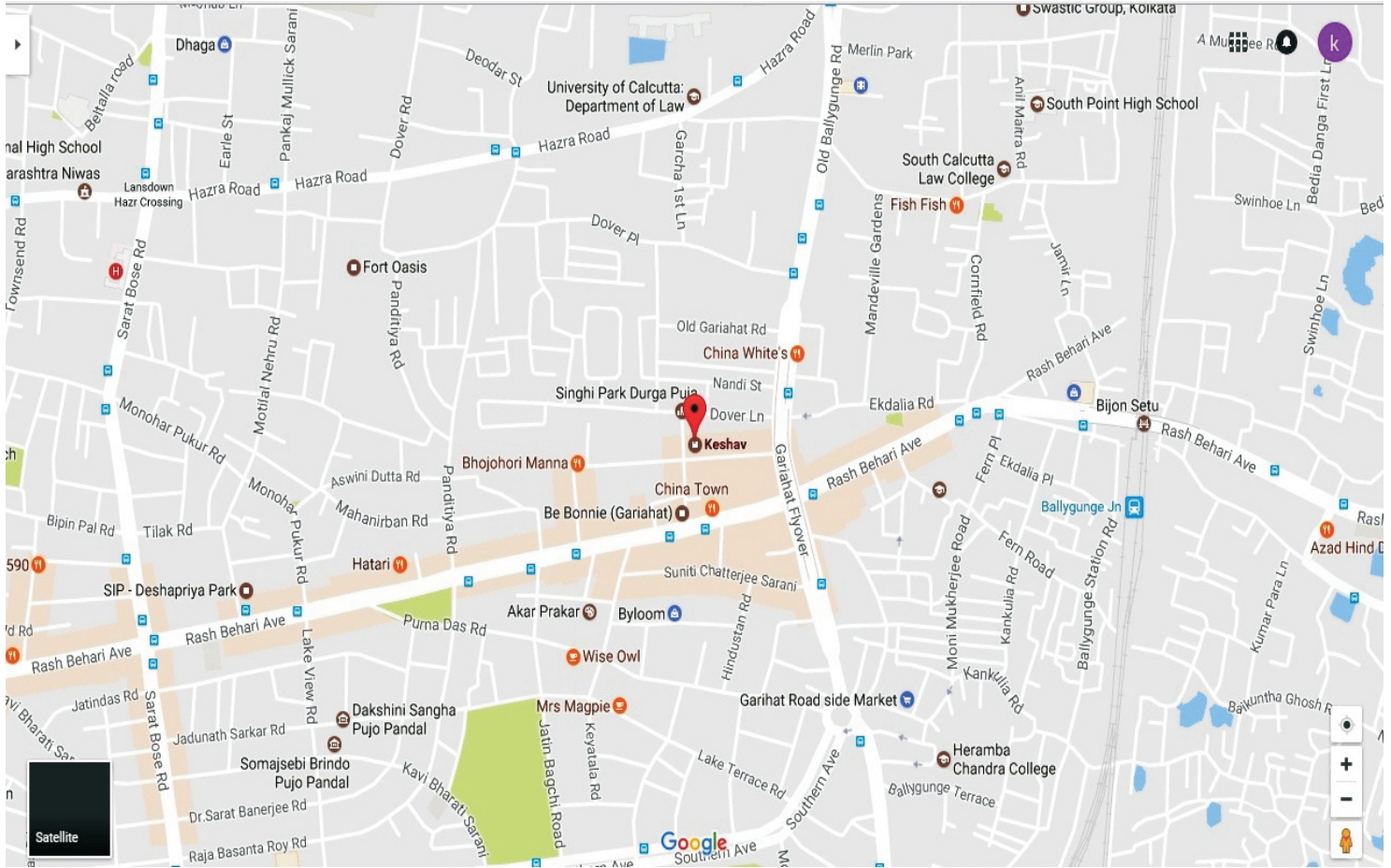


KESHAV



SWASTIC



LOCATION :

PROJECT :

**1/1B, Ramani Chatterjee Road
Kolkata - 700029**

FEATURES & FACILITIES:

- Free Hold Land
- Aesthetically designed entrance & lobby
- Car Wash
- Personalized Mail Box
- Provision for Cable/Dish TV
- Internal Electronic PBX connection
- Housing Loan Facility
- Captive Power Supply
- Decorated façade of Lift

OUR SPECIALITY:

ARCHITECTS:

ANJAN UKIL & ASSOCIATES

P-523, Raja Basanta Roy Road, Kolkata-700029 Ph:24656656

STRUCTURAL ENGINEER:

KSG ENGINEERING CONSULTANCY

P/543, Raja Basant Roy Road, Kolkata-700029 Ph: 40016498

ADVOCATE:

SANJAY KUMAR BAID

8.Old Post Office Street, Kolkata-700001 Ph:2623713

BANKER:

KOTAK MAHINDRA BANK

3A, Gariahat Road, Kolkata-700019

BUILDERS & DEVELOPERS:

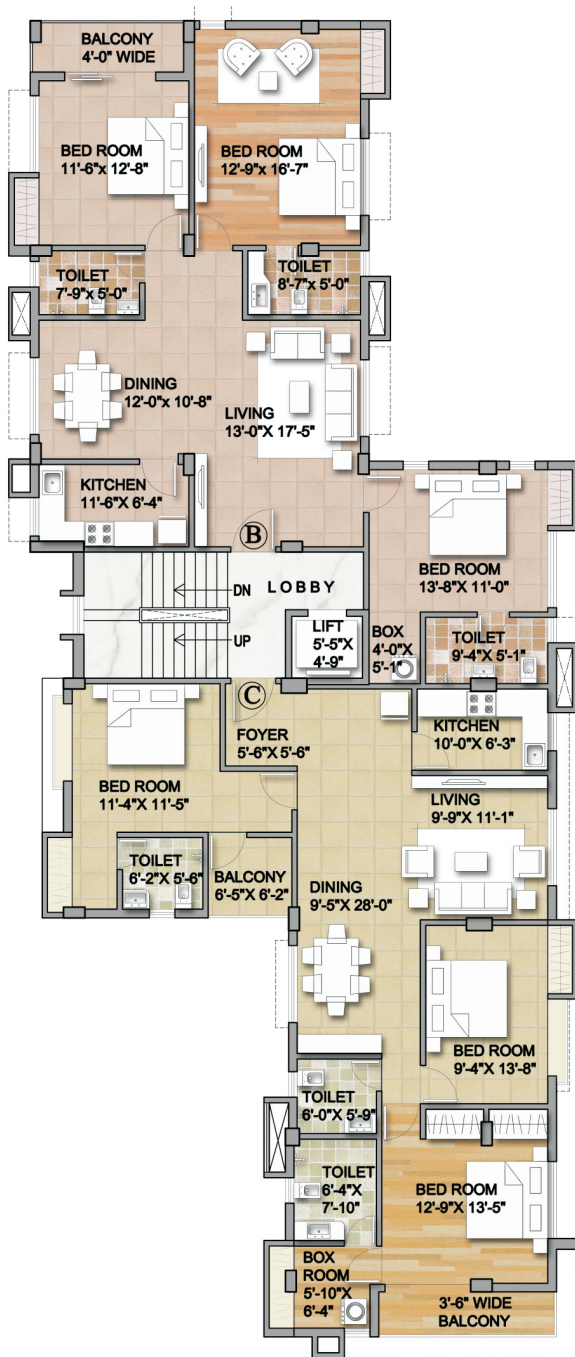
SATVIC PROJECTS PRIVATE LIMITED

(An ISO 9001:2008 Group Company)

Gopala" 21/2, Ballygunge Place, Kolkata- 700019

Ph: 24408788 Fax: 24409955

Email: sales@swasticgroup.cp, Web: <http://www.swasticgroup.com>



SPECIFICATION:

STRUCTURE:

Building designed on RCC frame and Foundation

FLOORING:

D/D Bottochine & other Vitrified Tiles flooring with skirting

KITCHEN:

Granite worktop, ceramic tiles with stainless sink

BATHROOM

Ceramic tiles, ISI CP fittings and sanitary ware

ELECTRICAL

Concealed copper wiring with modular switches and safety circuit breakers

DOORS

laminated with frame flush doors

WINDOWS

UPVC & Aluminum frame with glass panel and grills.

ELEVATORS

Adequate capacity of MRL make

INTERNAL WORKS

Wall putty over cement plastering

EXTERIOR

Weather Proof based aesthetically designed

1A/33, Kustia Road



31A, Raja Basant Roy Road



244, Rash Behari Avenue



3/2, Fern Road



DISCLAIMER : THIS IS NEITHER AN OFFER NOR A LEGAL EXHIBIT. THE BUILDER RETAINS THE RIGHT TO MODIFY OR ALTER ANY OF THE CONTENTS INCLUDING PLANS AT THEIR ABSOLUTE DISCRETION WITHOUT ANY NOTICE