

1/13 Dover Place



SWASTIC



LOCATION :
1/13, Dover Place,
Kolkata - 700019

OUR SPECIALITY:

ARCHITECTS:

ANJAN UKIL & ASSOCIATES

P-523, Raja Basanrta Roy Road, Kolkata-700029 Ph:24656656

STRUCTURAL ENGINEER:

KSG ENGINEERING CONSULTANCY

P/543, Raja Basanta Roy Road, Kolkata 700 029 Ph: 4001 6498

ADVOCATE:

SANJAY KUMAR BAID

8.Old Post Office Street, Kolkata-700001 Ph:2623713

BANKER:

KOTAK MAHINDRA BANK

3A, Gariahat Road, Kolkata-700019

BUILDERS & DEVELOPERS:

SWASTIC HEIGHTS PVT. LTD.

"Gopala", 21/2, Ballygunge Place, Kolkata 700019

Ph: 2440 8788

Email: sales@swasticgroup.com

Web: <http://www.swasticgroup.com>

FEATURES & FACILITIES:

Free Hold Land

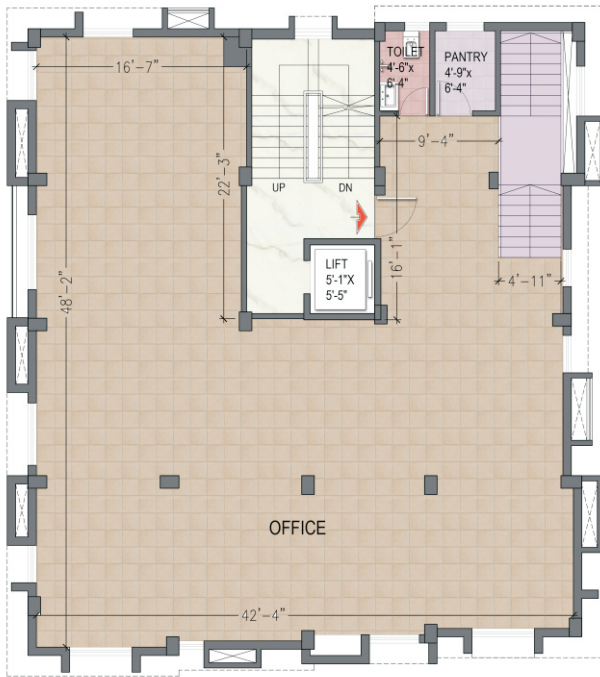
Car Wash

Personalised Mail Box

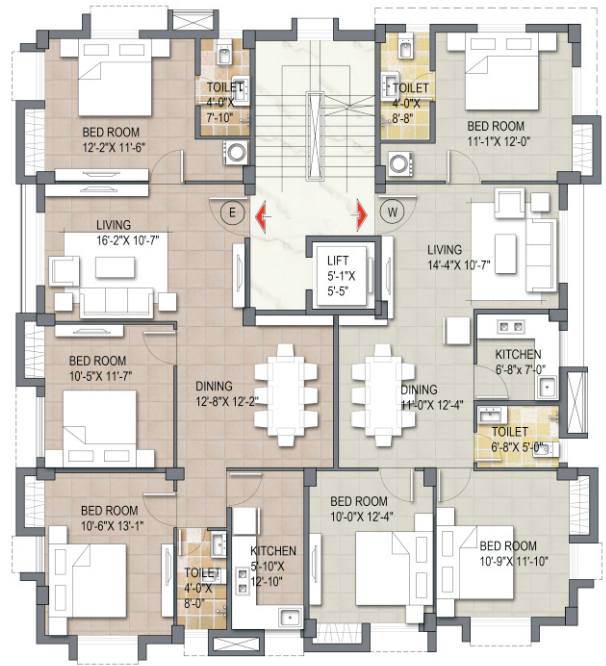
Provision for Cable / Dish TV

Housing Loan Facility

CCTV in common areas.



1st Floor Plan



2nd Floor Plan



SPECIFICATION:

- Structure** : Building designed on RCC frame and foundation.
- Flooring** : Vitrified Tiles in Living Dining and Rooms.
- Kitchen** : Granite worktop with Stainless Steel Sink, Ceramic tiles above counter.
- Bathroom** : Wall Dados with Ceramic tiles & Hindware or similar CP and Sanitary Ware fittings.
- Electric** : Concealed copper wiring with modular switches of Havells make.
- Doors** : Laminated flush doors with SS fittings.
- Windows** : Aluminum Shutters with glass panels.
- Lift** : Adequate capacity.
- Internal Walls** : White cement putty over cement plastering.
- Exterior** : Aesthetically designed Exterior.
- Lobby** : Decorated facade of Lift Lobby.
- Power Backup** : Soundless diesel system in full acoustic enclosure for common areas.

41, Lake Temple Road



55 South End Park



117 S P Mukharjee



10 Anil Moitra



DISCLAIMER :

This is neither an offer nor a legal exhibit. The Builder retains the right to modify or alter any of the contents including plans, layout and specifications at his absolute discretion without any notice.